

BUSINESS DEPOT OGDEN PLAT 10 AMENDED

IN OGDEN CITY

TAXING UNIT: 359

SCALE 1" = 200'

SEE BOOK 11 PAGE 23

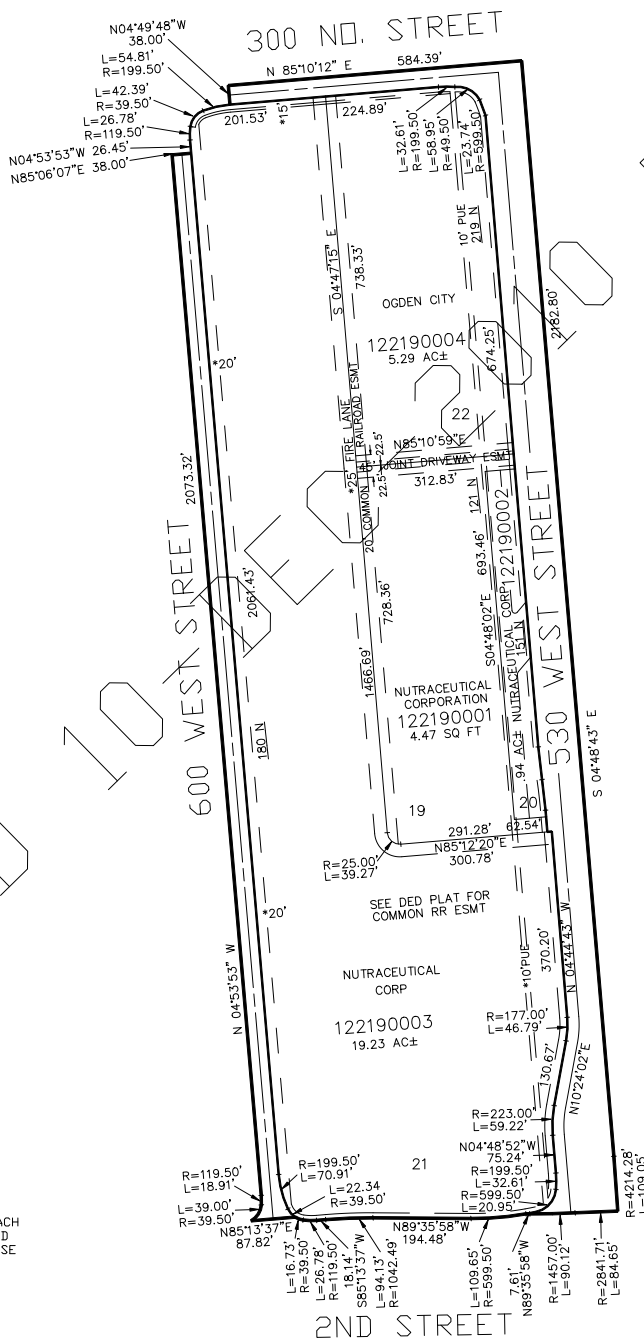
C. 7, T.6N., R.1W., S.L.B. & M.
D AMENDED

SEE PAGE 94

SEE PAGE 94

*EASEMENT AS PER
DEDICATION PLAT
BOOK 56 PAGE 96
NOT VACATED

FOR COMPLETE ENG DATA SEE
ORIGINAL DEDICATION PLAT IN
BOOK 64, PAGE 60 OF RECORDS.



10' UTILITY & DRAINAGE EASEMENTS EACH
SIDE OF PROPERTY LINES AS INDICATED
BY DASHED LINES EXCEPT AS OTHERWISE
SHOWN.

2ND STREET

SEE PAGE 94